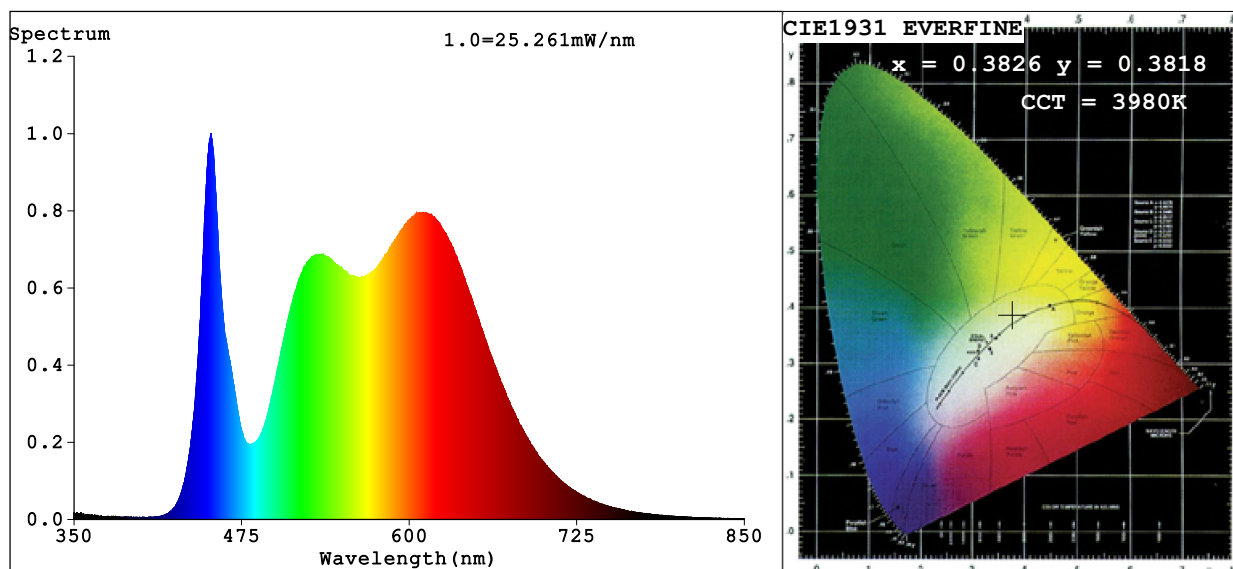


Spectrum Test Report



Color Parameters:

Chromaticity Coordinate: $x=0.3826$ $y=0.3818$ $u'=0.2245$ $v'=0.5041$

CCT=3980K (Duv=0.0017) Dominant WL:Ld =578.2nm Purity=29.4%

Ratio:R=19.9% G=76.8% B=3.3%; Peak WL:Lp=452.2nm FWHM=18.2nm

Render Index:Ra=91.2 CRI=86.3 TM30:Rf=89 Rg=100

R1 =93 R2 =93 R3 =91 R4 =94 R5 =91 R6 =90 R7 =94

R8 =84 R9 =54 R10=81 R11=93 R12=63 R13=93 R14=94 R15=89

Photo Parameters:

Flux = 1181 lm Eff. : 108.68 lm/W Fe = 3.772 W

Electrical parameters:

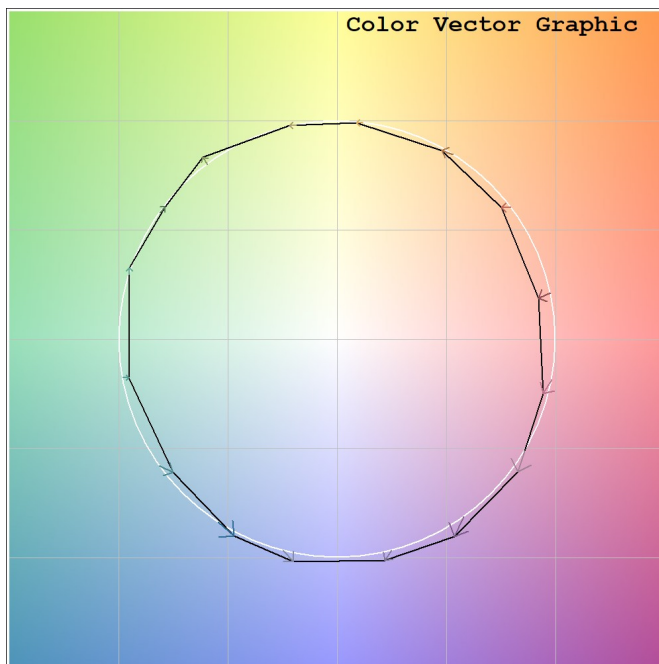
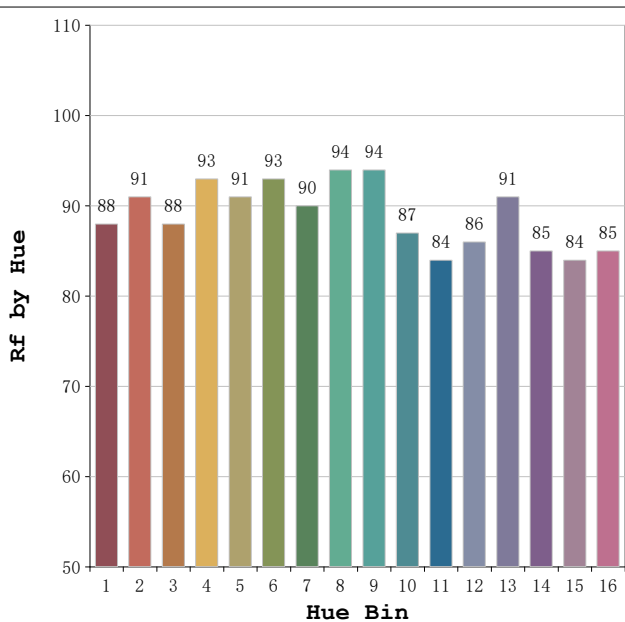
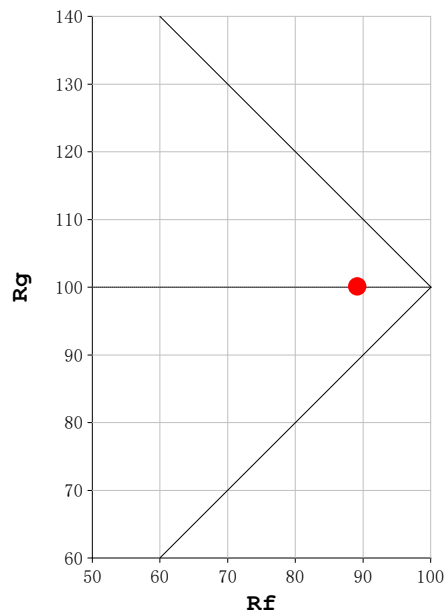
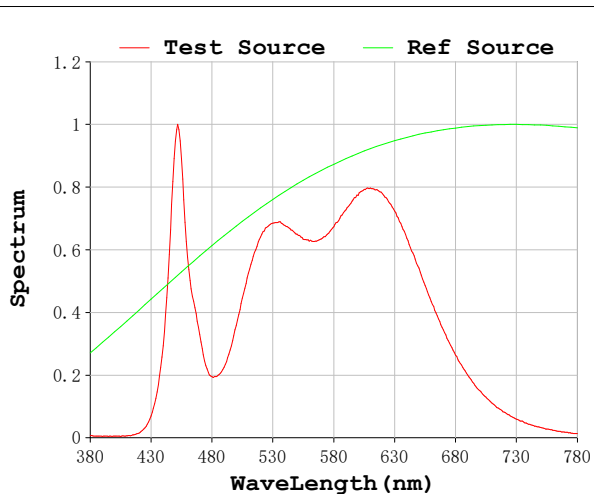
V = 23.998 V I = 0.4528 A P = 10.87 W PF = 1.000

Status: Integral T = 1279 ms Ip = 50295 (77%)

Model:Ecoled COB Roll to roll
Tester:Sergio Carneros
Temperature:20Deg
Manufacturer:Luz Negra

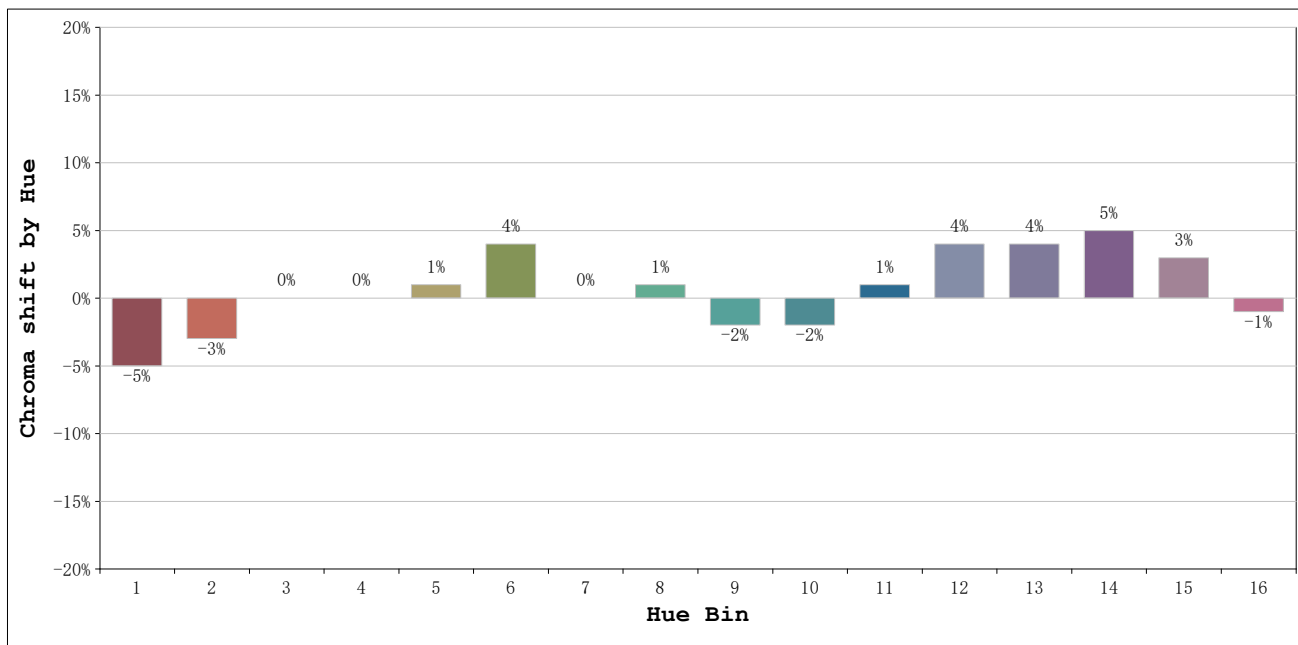
Number: 31.262
Date:2025-06-17 08:22:52
Humidity:50%
Remarks:100cm de tira flexible

Rf: 89 **CCT: 3980 K** **u': 0.2245**
Rg: 100 **Duv: 0.0017** **v': 0.5041**



Model:Ecoled COB Roll to roll
 Tester:Sergio Carneros
 Temperature:20Deg
 Manufacturer:Luz Negra

Number: 31.262
 Date:2025-06-17 08:22:52
 Humidity:50%
 Remarks:100cm de tira flexible



			Graphic shift(%)	
Hue Bin	Hue Angle	Rf	Chroma	Hue
1	0.0° - 22.5°	88	-5	0
2	22.5° - 45.0°	91	-3	2
3	45.0° - 67.5°	88	0	5
4	67.5° - 90.0°	93	0	3
5	90.0° - 112.5°	91	1	3
6	112.5° - 135.0°	93	4	0
7	135.0° - 157.5°	90	0	-2
8	157.5° - 180.0°	94	1	-2
9	180.0° - 202.5°	94	-2	1
10	202.5° - 225.0°	87	-2	6
11	225.0° - 247.5°	84	1	10
12	247.5° - 270.0°	86	4	6
13	270.0° - 292.5°	91	4	-3
14	292.5° - 315.0°	85	5	-7
15	315.0° - 337.5°	84	3	-8
16	337.5° - 360.0°	85	-1	-6

Model:Ecoled COB Roll to roll
 Tester:Sergio Carneros
 Temperature:20Deg
 Manufacturer:Luz Negra

Number: 31.262
 Date:2025-06-17 08:22:52
 Humidity:50%
 Remarks:100cm de tira flexible